

Apps & sites used by Northwest Paddleboards for planning SUP trips both home & abroad

So you have come up with a plan to paddle from A to B but are unsure of where to turn to for tidal, weather & mapping information.....

Here is a brief overview of the apps & sites we use. We access these on an iPhone so all are mobile friendly; in fact all with the exception of Visit My Harbour are optimised for mobile use.

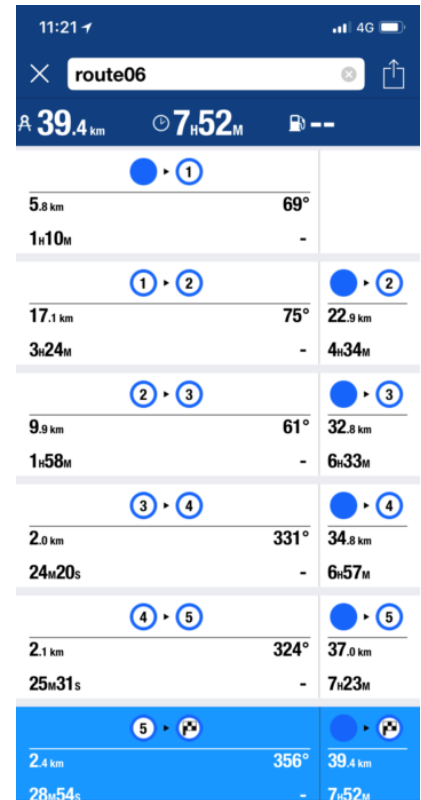
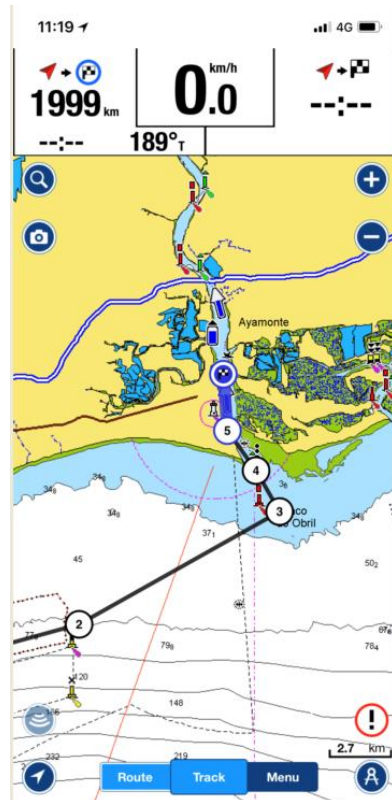
It goes without saying there are many other very good sites out there that are well worth checking out including windguru, magic seaweed, etc but the below are the ones that work well for us. Click on the [titles](#) to go to sites

As ever – if anyone has any questions or comments please do [get in touch](#) – always happy to help

[Navionics](#) is our go-to mapping tool. It is a fully featured chart plotter showing tidal & current information. You do need to pay to download the detailed charts but if you are going to be paddling regularly then it is, in our opinion, a worthwhile investment (e.g. full charts & tidal info covering UK, Ireland & the Netherlands is £33)

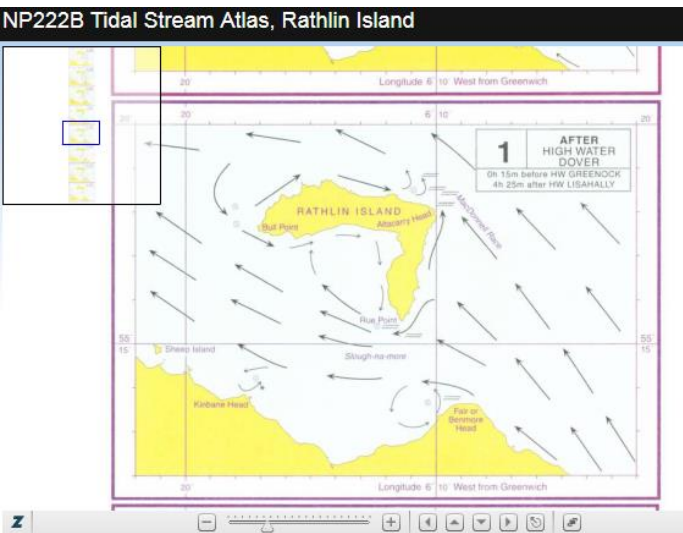
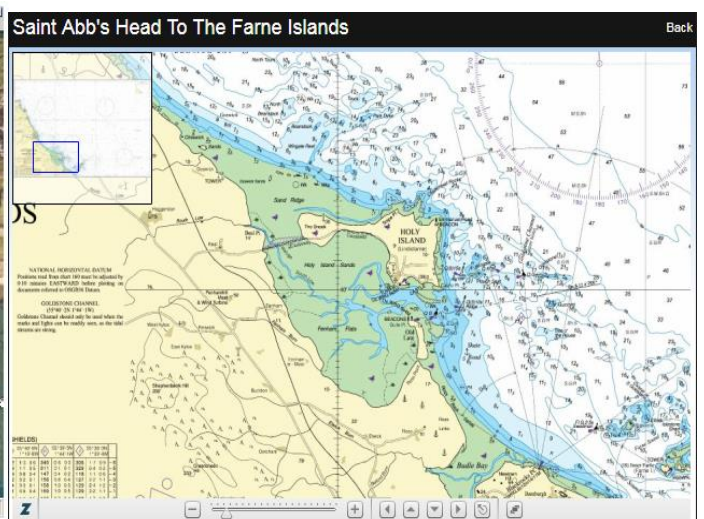
It also allows you to download sections for use offline should you expect to be out of mobile signal or want to avoid data/roaming charges

One feature that we use a lot is the route planning which once set up with your projected paddling speed will give you time and distance between waypoints



[Visitmyharbour](#) this site gives full info (including photos) on harbours around the UK & has copies of the paper charts available to view as well as tidal stream info & tide tables.

Again, there is a charge (£25 one off fee) to access all of the information but it gives you features such as viewing the charts as a layer over Goggle Earth

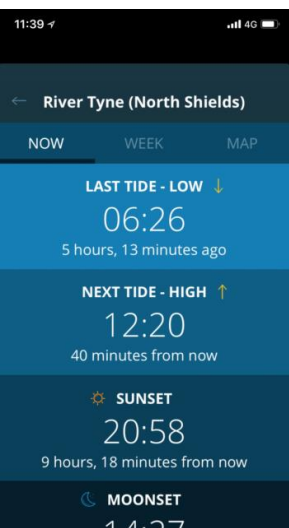


JAN 2018		Inverness, Inverness Firth		GMT		Add 1 hour for BST	
01	02	03	04	05	06	07	08
09	10	11	12	13	14	15	16
17	18	19	20	21	22	23	24
25	26	27	28	29	30	31	

FEB 2018		Inverness, Inverness Firth		GMT		Add 1 hour for BST	
01	02	03	04	05	06	07	08
09	10	11	12	13	14	15	16
17	18	19	20	21	22	23	24
25	26	27	28	29	30		

NOT TO BE USED FOR NAVIGATION PURPOSES

[Tides near me](#) if you are out & about and want quick simple accurate tidal info for your current location then simply open the Tides Near Me app & it will display how long since the last high/low tide & the time to the next.



www.tides4fishing.com is a free to use site and contains absolutely everything you could need relating to tide, weather, wind, sea state, sunrise/set.

It is a mine of information, well presented, well laid out & informative with a lot of links & help guides.

Don't be put off by the fishing element – this site is very good and relevant to paddleboarding – presenting all the info in one place without having to flick from site to site.

The screenshot shows the website's interface for Aldeburgh. It includes a weather forecast for May 10, 2018, with a clear sky and 26 km/h wind. Key metrics include a temperature of 12°C, humidity of 61%, and visibility of 15 km. The atmospheric pressure is 1018 hPa. A tide chart shows the current tide rising from 10:00 to 10:23. A water temperature chart indicates the current temperature is 10°C. A UV index of 11 is shown as extreme. A notice states that the prediction algorithm for water temperature is in development.

This section provides detailed tide and swell information for Aldeburgh. It includes a swell forecast with a wave direction of W (270°), significant height of 0.3 m, and wave period of 3.6 s. The tide chart shows a high tide at 11:00 and a low tide at 20:30. A table of tides for Aldeburgh lists the time, height, and coefficient for each tide. A legend explains the tide symbols and fish activity levels. A Hertz advertisement is also present.

DAY	1 st TIDE	2 nd TIDE	3 rd TIDE	4 th TIDE	COEFFICIENT	FISHING ACTIVITY		
1 Tue	05:24	20:20	05:01	01:01	153/21	18.2/21	18	high
2 Wed	05:22	20:21	12:59	04:47	134/83	19/83	19	high
3 Thu	05:22	20:23	2:06	2:22	142/53	19/53	19	average
4 Fri	05:18	20:25	2:16	2:08	145/41	20/41	19	average
5 Sat	05:15	20:26	3:19	0:27	152/31	20/31	19	low
6 Sun	05:14	20:28	3:52	0:02	160/21	21/21	19	low
7 Mon	05:13	20:29	4:34	0:05	164/23	22/23	19	low
8 Tue	05:11	20:31	5:27	0:09	169/24	23/24	19	low
9 Wed	05:09	20:33	6:26	0:15	174/25	24/25	19	low
10 Thu	05:08	20:34	7:19	0:24	177/26	25/26	19	average
11 Fri	05:06	20:36	8:13	0:35	182/27	26/27	19	average
12 Sat	05:04	20:37	9:01	0:47	186/28	27/28	19	high
13 Sun	05:03	20:39	9:50	0:58	189/29	28/29	19	high
14 Mon	05:01	20:41	10:41	1:10	191/30	29/30	19	high
15 Tue	05:00	20:42	11:30	1:23	193/31	30/31	19	very high
16 Wed	04:58	20:44	12:21	1:37	195/32	31/32	19	very high
17 Thu	04:57	20:45	13:11	1:51	197/33	32/33	19	very high
18 Fri	04:55	20:47	14:01	2:05	199/34	33/34	19	high
19 Sat	04:54	20:48	14:52	2:19	201/35	34/35	19	high
20 Sun	04:53	20:50	15:43	2:33	203/36	35/36	19	average

Windy – a fully interactive & customisable weather map showing both current & forecasted conditions

Colour coded & animated makes it easy to view at a glance and the ability to zoom out gives you the bigger picture of what's going on weather wise. There are options too to view different weather models including one that adjusts the windspeed/direction depending on the local geography.

As well as wind the map can display temperature, rainfall, wave height etc as both charts and traditional forecast

The screenshot shows the Windy.com weather map for Copeland. It displays a detailed view of the coastline with wind speed and direction indicators. A legend on the right shows symbols for wind, rain, snow, temperature, clouds, and waves. A forecast chart at the bottom shows the weather for Thursday 10, Friday 11, Saturday 12, and Sunday 13.